

| Activity ID | Activity Name | Original Duration | Remaining Duration | Start | Finish | Total Float | 2011 | | | |
|---|---|-------------------|--------------------|-------------|-------------|-------------|------|-----|-----|-----|
| | | | | | | | Sep | Oct | Nov | Dec |
| Reclamation in NPR3 ver.9.5 2011_11_21 | | 115 | 23 | 21-Jul-11 A | 19-Dec-11 | -39 | | | | |
| Landside | | 115 | 23 | 05-Aug-11 A | 19-Dec-11 | -39 | | | | |
| | Installation Seawall Blocks to B6 and B7 | 55 | 0 | 13-Aug-11 A | 18-Oct-11 A | | | | | |
| | Construct the Concrete Coping at B6 and B7 | 82 | 0 | 13-Aug-11 A | 07-Nov-11 A | | | | | |
| | Laying Geotextile & Filter Material | 86 | 0 | 05-Aug-11 A | 14-Nov-11 A | | | | | |
| | Construct Open Channel U under IEC | 33 | 0 | 23-Sep-11 A | 30-Oct-11 A | | | | | |
| | Construct Open Channel U outside IEC | 32 | 20 | 30-Sep-11 A | 15-Dec-11 | -36 | | | | |
| | Construct the Drainage Pipeline at West of Open Channel U | 34 | 0 | 30-Sep-11 A | 31-Oct-11 A | | | | | |
| | Construct the Drainage Pipeline at East of Open Channel U | 28 | 17 | 01-Nov-11 A | 15-Dec-11 | -31 | | | | |
| | Unloading Sorted Public Fill behind new seawall | 53 | 0 | 15-Aug-11 A | 20-Nov-11 A | | | | | |
| | Reclamation | 98 | 23 | 13-Aug-11 A | 19-Dec-11 | -39 | | | | |
| Seaside | | 100 | 23 | 21-Jul-11 A | 19-Dec-11 | -39 | | | | |
| | Construction of Outlet Pipe from City Garden | 54 | 20 | 12-Oct-11 A | 19-Dec-11 | -34 | | | | |
| | Construction of B8 | 13 | 13 | 15-Nov-11 A | 09-Dec-11 | -31 | | | | |

█ Actual Work
 █ Critical Remaining Work
 ▼ Summary
█ Remaining Work
 ◆ Milestone

Contract No. HK/2009/01

Contract Title : Wan Chai Development Phase II - Central - Wan Chai Bypass at HKCEC

Working Programme for Marine Works (Dredging and Backfilling)

| ACTIVITY | START | FINISH | 2010 | | | | | | | | | | | | 2011 | | | | | | | | | | | | 2012 | | | | | | | | | | | | 2013 | | | | | | | | | | | | | | | | | | | | | | | | | | | | | | | |
|---|---------|----------|------|-----|-----|-----|-----|-----|-----|-----|-----|-----|-----|-----|------|-----|-----|-----|-----|-----|-----|-----|-----|-----|-----|-----|------|-----|-----|-----|-----|-----|-----|-----|-----|-----|-----|-----|------|-----|-----|-----|-----|-----|-----|-----|-----|-----|-----|--|--|--|--|--|--|--|--|--|--|--|--|--|--|--|--|--|--|--|--|--|
| | | | Feb | Mar | Apr | May | Jun | Jul | Aug | Sep | Oct | Nov | Dec | Jan | Feb | Mar | Apr | May | Jun | Jul | Aug | Sep | Oct | Nov | Dec | Jan | Feb | Mar | Apr | May | Jun | Jul | Aug | Sep | Oct | Nov | Dec | Jan | Feb | Mar | Apr | May | Jun | Jul | Aug | Sep | Oct | Nov | Dec | | | | | | | | | | | | | | | | | | | | | |
| Submissions before Works Commencement | | | | | | | | | | | | | | | | | | | | | | | | | | | | | | | | | | | | | | | | | | | | | | | | | | | | | | | | | | | | | | | | | | | | | | |
| Submit silt curtain deployment plan | 31/3/10 | 31/3/10 | ◆ | | | | | | | | | | | | | | | | | | | | | | | | | | | | | | | | | | | | | | | | | | | | | | | | | | | | | | | | | | | | | | | | | | | |
| Submit silt screen deployment plan | 31/3/10 | 31/3/10 | ◆ | | | | | | | | | | | | | | | | | | | | | | | | | | | | | | | | | | | | | | | | | | | | | | | | | | | | | | | | | | | | | | | | | | | |
| Submit measures to mitigate noise impact | 31/3/10 | 31/3/10 | ◆ | | | | | | | | | | | | | | | | | | | | | | | | | | | | | | | | | | | | | | | | | | | | | | | | | | | | | | | | | | | | | | | | | | | |
| Cross Harbour Watermains from WCN to TST (DP6) | | | | | | | | | | | | | | | | | | | | | | | | | | | | | | | | | | | | | | | | | | | | | | | | | | | | | | | | | | | | | | | | | | | | | | |
| Trench dredging for marine watermains installation | 29/4/10 | 28/10/10 | | | | ■ | | | | | | | | | | | | | | | | | | | | | | | | | | | | | | | | | | | | | | | | | | | | | | | | | | | | | | | | | | | | | | | | |
| Backfilling for watermain | 28/1/11 | 14/12/11 | | | | | | | | | | | | | ■ | | | | | | | | | | | | | | | | | | | | | | | | | | | | | | | | | | | | | | | | | | | | | | | | | | | | | | | |
| Reclamation Works at HKCEC Water Channel (DP3) | | | | | | | | | | | | | | | | | | | | | | | | | | | | | | | | | | | | | | | | | | | | | | | | | | | | | | | | | | | | | | | | | | | | | | |
| Dredging at HKCEC Water Channel (Western Part) | 1/6/10 | 1/8/10 | | | | ■ | | | | | | | | | | | | | | | | | | | | | | | | | | | | | | | | | | | | | | | | | | | | | | | | | | | | | | | | | | | | | | | | |
| Backfilling to +3.5mPD (Western Part) | 17/8/10 | 6/2/11 | | | | | | | ■ | | | | | | | | | | | | | | | | | | | | | | | | | | | | | | | | | | | | | | | | | | | | | | | | | | | | | | | | | | | | | |
| Dredging at HKCEC Water Channel (Middle Part) | 2/8/10 | 6/1/11 | | | | | | | ■ | | | | | | | | | | | | | | | | | | | | | | | | | | | | | | | | | | | | | | | | | | | | | | | | | | | | | | | | | | | | | |
| Backfilling to +3.5mPD (Middle Part) | 21/2/11 | 1/6/11 | | | | | | | | | | | | | ■ | | | | | | | | | | | | | | | | | | | | | | | | | | | | | | | | | | | | | | | | | | | | | | | | | | | | | | | |
| Dredging at HKCEC Water Channel (Eastern Part) | 1/12/12 | 31/12/12 | | | | | | | | | | | | | | | | | | | | | | | | | | | | | | | | | | | | | | | | | | | | | | | | | | | | | | | | | | | | | | | | | | | | |
| Backfilling to +3.5mPD (Eastern Part) | 16/1/13 | 30/4/13 | | | | | | | | | | | | | | | | | | | | | | | | | | | | | | | | | | | | | | | | ■ | | | | | | | | | | | | | | | | | | | | | | | | | | | | |

**Dredging & Reclamation Works Programme Summary
(based on Initial Works Programme Rev. 0)**

| ID | Task Name | Duration | Start | 2010 2011 2012 2013 2014 2015 | | | | | | | | | | | | | | | | | | | | | | | |
|----|---|---------------|--------------------|-------------------------------|----|----|----|----|----|----|----|----|----|----|----|----|----|----|----|----|----|----|----|----|--|--|--|
| | | | | Q4 | Q1 | Q2 | Q3 | Q4 | Q1 | Q2 | Q3 | Q4 | Q1 | Q2 | Q3 | Q4 | Q1 | Q2 | Q3 | Q4 | Q1 | Q2 | Q3 | Q4 | | | |
| 1 | HK/2009/02-Marine & Reclamation Works | 2008 d | Thu 28/1/10 | | | | | | | | | | | | | | | | | | | | | | | | |
| 2 | Contract Commencement | 0 d | Thu 28/1/10 | | | | | | | | | | | | | | | | | | | | | | | | |
| 3 | General | 1879 d | Mon 22/2/10 | | | | | | | | | | | | | | | | | | | | | | | | |
| 4 | Submission & obtain approval for marine GI | 21 d | Mon 22/2/10 | | | | | | | | | | | | | | | | | | | | | | | | |
| 5 | Stage 1 Marine GI for reclamation | 30 d | Mon 15/3/10 | | | | | | | | | | | | | | | | | | | | | | | | |
| 6 | Engineer's Design review for Dredging of WCR1, WCR2 & WCR4 | 30 d | Mon 22/3/10 | | | | | | | | | | | | | | | | | | | | | | | | |
| 7 | Relocation of New Star Ferry Pier | 0 d | Tue 18/3/14 | | | | | | | | | | | | | | | | | | | | | | | | |
| 8 | Demolition of Existing Star Ferry Pier | 100 d | Tue 18/3/14 | | | | | | | | | | | | | | | | | | | | | | | | |
| 9 | Stage 2 Marine GI for Reclamation | 14 d | Tue 18/3/14 | | | | | | | | | | | | | | | | | | | | | | | | |
| 10 | Engineer's Design review for Dredging of WCR3 | 21 d | Tue 25/3/14 | | | | | | | | | | | | | | | | | | | | | | | | |
| 11 | Complete Diversion of Hung Hing Road Traffic Back to Original | 20 d | Fri 6/2/15 | | | | | | | | | | | | | | | | | | | | | | | | |
| 12 | Excavate & remove top of d-wall for permanent seawall construction | 50 d | Wed 25/2/15 | | | | | | | | | | | | | | | | | | | | | | | | |
| 13 | Submarine Outfall | 500 d | Tue 21/9/10 | | | | | | | | | | | | | | | | | | | | | | | | |
| 14 | Dredging, Laying and Backfilling of Submarine Outfall Pipe at Sea | 500 d | Tue 21/9/10 | | | | | | | | | | | | | | | | | | | | | | | | |
| 15 | Phase 1 - WCR1 | 158 d | Wed 21/4/10 | | | | | | | | | | | | | | | | | | | | | | | | |
| 16 | Mobilization of plants | 1 d | Wed 21/4/10 | | | | | | | | | | | | | | | | | | | | | | | | |
| 17 | Seabed dredging | 63 d | Wed 21/4/10 | | | | | | | | | | | | | | | | | | | | | | | | |
| 18 | Bedding Filling and Permanent seawall (precast cassion) | 60 d | Tue 22/6/10 | | | | | | | | | | | | | | | | | | | | | | | | |
| 19 | Bulk reclamation | 37 d | Fri 20/8/10 | | | | | | | | | | | | | | | | | | | | | | | | |
| 20 | Phase 2 - WCR2 | 149 d | Thu 1/3/12 | | | | | | | | | | | | | | | | | | | | | | | | |
| 21 | Mobilization of plants | 1 d | Thu 1/3/12 | | | | | | | | | | | | | | | | | | | | | | | | |
| 22 | Temp seawall and Seabed dredging | 77 d | Thu 1/3/12 | | | | | | | | | | | | | | | | | | | | | | | | |
| 23 | Bulk reclamation | 73 d | Wed 16/5/12 | | | | | | | | | | | | | | | | | | | | | | | | |
| 24 | Phase 3 - TWCR4 & WCR4 | 98 d | Sat 28/4/12 | | | | | | | | | | | | | | | | | | | | | | | | |
| 25 | Mobilization of plants | 1 d | Sat 28/4/12 | | | | | | | | | | | | | | | | | | | | | | | | |
| 26 | Temp Seawall and Seabed dredging | 75 d | Sat 28/4/12 | | | | | | | | | | | | | | | | | | | | | | | | |
| 27 | Bulk & temp reclamation | 24 d | Wed 11/7/12 | | | | | | | | | | | | | | | | | | | | | | | | |
| 28 | Phase 4 - WCR3 | 294 d | Tue 18/3/14 | | | | | | | | | | | | | | | | | | | | | | | | |
| 29 | Mobilization of plants | 1 d | Tue 18/3/14 | | | | | | | | | | | | | | | | | | | | | | | | |
| 30 | Seabed dredging for Permanent Seawall | 112 d | Tue 18/3/14 | | | | | | | | | | | | | | | | | | | | | | | | |
| 31 | Backfill and permanent seawall (precast cassion) | 108 d | Tue 8/7/14 | | | | | | | | | | | | | | | | | | | | | | | | |
| 32 | Bulk reclamation | 74 d | Fri 24/10/14 | | | | | | | | | | | | | | | | | | | | | | | | |
| 33 | Phase 5 - Construct Permanent Seawall Blocks along curved coastline & Remove TWCR4 | 105 d | Wed 15/4/15 | | | | | | | | | | | | | | | | | | | | | | | | |
| 34 | Mobilization of plants | 1 d | Wed 15/4/15 | | | | | | | | | | | | | | | | | | | | | | | | |
| 35 | Dredging and Filling for permanent seawall construction | 50 d | Wed 15/4/15 | | | | | | | | | | | | | | | | | | | | | | | | |
| 36 | Construction of Permanent Seawall Blocks for curved coastline | 56 d | Wed 3/6/15 | | | | | | | | | | | | | | | | | | | | | | | | |
| 37 | Remove temp seawall and reinstate the location of TWCR4 | 30 d | Mon 29/6/15 | | | | | | | | | | | | | | | | | | | | | | | | |

Project: Reclamation Works Programme
Date: Tue 9/3/10

| | | | | | | | |
|-----------|--|---------------------|--|--------------------|--|------------------|--|
| Task | | Summary | | Rolled Up Progress | | Project Summary | |
| Progress | | Rolled Up Task | | Split | | Group By Summary | |
| Milestone | | Rolled Up Milestone | | External Tasks | | Deadline | |

| Activity ID | Cal ID | Activity Description | Orig Dur | Early Start | Early Finish | Year | | | | | | | | | | | | | | | |
|---------------------------------|--------|---|----------|-------------|--------------|------|------|------|------|------|------|------|------|--|--|--|--|--|--|--|--|
| | | | | | | 2010 | 2011 | 2012 | 2013 | 2014 | 2015 | 2016 | 2017 | | | | | | | | |
| TCBR1E (TS1 Area) | | | | | | | | | | | | | | | | | | | | | |
| 105 | 1 | TCBR1E(TS1)-dredging+rockfill(pre. for seawall) | 86 | 03DEC10* | 26FEB11 | | | | | | | | | | | | | | | | |
| 110 | 1 | TCBR1E (TS1)-temporary reclamation | 69 | 28JAN11* | 06APR11 | | | | | | | | | | | | | | | | |
| 155 | 1 | TCBR1E (TS1)- removal of temporary reclamation | 27 | 30JAN12* | 25FEB12 | | | | | | | | | | | | | | | | |
| TCBR4 | | | | | | | | | | | | | | | | | | | | | |
| 100 | 1 | Maintenance dredging for navigation safety for | 7 | 20NOV10* | 26NOV10 | | | | | | | | | | | | | | | | |
| TCBR2 + TCBR3 (TS2 Area) | | | | | | | | | | | | | | | | | | | | | |
| 115 | 1 | TCBR2&TCBR3(TS2)- Maintenance dredging for | 5 | 15NOV10* | 19NOV10 | | | | | | | | | | | | | | | | |
| 117 | 1 | TCBR2&TCBR3(TS2)-dredge+rockfill seabed | 64 | 16DEC11* | 17FEB12 | | | | | | | | | | | | | | | | |
| 120 | 1 | TCBR2&TCBR3(TS2) --temporary reclamation | 115 | 26FEB12* | 19JUN12 | | | | | | | | | | | | | | | | |
| 160 | 1 | TCBR2&TCBR3(TS2-removal temporary reclamation | 57 | 18AUG13* | 13OCT13 | | | | | | | | | | | | | | | | |
| TCBR1W (TS4 Area) | | | | | | | | | | | | | | | | | | | | | |
| 125 | 1 | TCBR1W(TS4)-dredging+rockfill(pre. for seawall) | 40 | 19DEC10* | 27JAN11 | | | | | | | | | | | | | | | | |
| 130 | 1 | TCBR1W(TS4) --temporary reclamation | 68 | 28JAN11 | 05APR11 | | | | | | | | | | | | | | | | |
| 165 | 1 | TCBR1W(TS4)--removal temporary reclamation | 26 | 27OCT13* | 21NOV13 | | | | | | | | | | | | | | | | |
| TPCWAE | | | | | | | | | | | | | | | | | | | | | |
| 135 | 1 | TPCWAE-dredging+rockfill(pre. for seawall) | 55 | 03DEC10* | 26JAN11 | | | | | | | | | | | | | | | | |
| 140 | 1 | TPCWAE --temporary reclamation | 77 | 27JAN11 | 13APR11 | | | | | | | | | | | | | | | | |
| 170 | 1 | TPCWAE--removal temporary reclamation | 28 | 28SEP13* | 25OCT13 | | | | | | | | | | | | | | | | |
| TPCWAW | | | | | | | | | | | | | | | | | | | | | |
| 145 | 1 | TPCWAW-dredging+rockfill(pre. for seawall) | 47 | 28OCT13* | 13DEC13 | | | | | | | | | | | | | | | | |
| 150 | 1 | TPCWAW --temporary reclamation | 83 | 14DEC13 | 06MAR14 | | | | | | | | | | | | | | | | |
| 175 | 1 | TPCWAW--removal temporary reclamation | 50 | 02JUL15* | 20AUG15 | | | | | | | | | | | | | | | | |

| | |
|--|-------------------|
|  | Early Bar |
|  | Progress Bar |
|  | Critical Activity |

EP02 CHINA STATE CONSTRUCTION ENGG LTD Sheet 1 of 1
 CONTRACT NO. HY/2009/15: CENTRAL WAN CHAI BYPASS- TUNNEL (CBTS SECTION)

Prepared based on IWP Rev. 0
 Date Prepared: 28 Oct 2010

| Act ID | Description | Orig Dur | Early Start | Early Finish | 2011 | | | | | | | | | | | | 2012 | | | | | | | | | | | | 2013 | | | | | |
|----------------------------|---|----------|-------------|--------------|--|-----|-----|-----|-----|-----|-----|-----|-----|-----|-----|-----|------|-----|-----|-----|-----|-----|-----|-----|-----|-----|-----|-----|------|-----|-----|--|--|--|
| | | | | | JAN | FEB | MAR | APR | MAY | JUN | JUL | AUG | SEP | OCT | NOV | DEC | JAN | FEB | MAR | APR | MAY | JUN | JUL | AUG | SEP | OCT | NOV | DEC | JAN | FEB | MAR | | | |
| Section I | | | | | | | | | | | | | | | | | | | | | | | | | | | | | | | | | | |
| Contract Obligation | | | | | | | | | | | | | | | | | | | | | | | | | | | | | | | | | | |
| 1000 | Commencement of Section I of works | 0 | 20JAN11 * | | ◆ Commencement of Section I of works | | | | | | | | | | | | | | | | | | | | | | | | | | | | | |
| Initial Works | | | | | | | | | | | | | | | | | | | | | | | | | | | | | | | | | | |
| 1050 | Apply Marine notice to Marine Department | 30 | 21JAN11 | 19FEB11 | ■ Apply Marine notice to Marine Department (dredg) | | | | | | | | | | | | | | | | | | | | | | | | | | | | | |
| 1060 | Apply Marine notice to Marine Dept. Piling | 30 | 18FEB11 | 19MAR11 | ■ Apply Marine notice to Marine Dept. Piling | | | | | | | | | | | | | | | | | | | | | | | | | | | | | |
| 1080 | Apply FEP under EP356/2009 | 21 | 28FEB11 | 20MAR11 | ■ Apply FEP under EP356/2009 | | | | | | | | | | | | | | | | | | | | | | | | | | | | | |
| 1081 | Submission of Works Schedule for FEP | 14 | 05MAR11 | 21MAR11 | ■ Submission of Works Schedule for FEP | | | | | | | | | | | | | | | | | | | | | | | | | | | | | |
| 1082 | Submission of Location Plan for FEP | 14 | 05MAR11 | 21MAR11 | ■ Submission of Location Plan for FEP | | | | | | | | | | | | | | | | | | | | | | | | | | | | | |
| 1083 | Submission of Silt Curtain Deployment | 14 | 05MAR11 | 21MAR11 | ■ Submission of Silt Curtain Deployment Plan | | | | | | | | | | | | | | | | | | | | | | | | | | | | | |
| 1084 | Submission of Silt Screen Deployment Plan | 14 | 05MAR11 | 21MAR11 | ■ Submission of Silt Screen Deployment Plan | | | | | | | | | | | | | | | | | | | | | | | | | | | | | |
| 1085 | Submission Noise Management Plan | 14 | 05MAR11 | 21MAR11 | ■ Submission Noise Management Plan | | | | | | | | | | | | | | | | | | | | | | | | | | | | | |
| 1090 | Apply Dumping Permit | 30 | 18FEB11 | 19MAR11 | ■ Apply Dumping Permit | | | | | | | | | | | | | | | | | | | | | | | | | | | | | |
| 1100 | Apply CNP | 30 | 31JAN11 | 01MAR11 | ■ Apply CNP | | | | | | | | | | | | | | | | | | | | | | | | | | | | | |
| 1110 | Apply C&D waste disposal | 30 | 20JAN11 | 18FEB11 | ■ Apply C&D waste disposal | | | | | | | | | | | | | | | | | | | | | | | | | | | | | |
| 1120 | Apply Discharge licence | 30 | 18FEB11 | 19MAR11 | ■ Apply Discharge licence | | | | | | | | | | | | | | | | | | | | | | | | | | | | | |
| 1130 | Notification of chemical waste Producer | 30 | 20JAN11 | 18FEB11 | ■ Notification of chemical waste Producer | | | | | | | | | | | | | | | | | | | | | | | | | | | | | |
| 1140 | Notification to Labor Dept-Works | 30 | 20JAN11 | 18FEB11 | ■ Notification to Labor Dept-Works Commencement | | | | | | | | | | | | | | | | | | | | | | | | | | | | | |
| 1150 | Submit Risk Ass to MTR | 21 | 28FEB11 | 20MAR11 | ■ Submit Risk Ass to MTR | | | | | | | | | | | | | | | | | | | | | | | | | | | | | |
| 1260 | Erect Hoarding | 30 | 28FEB11 | 29MAR11 | ■ Erect Hoarding | | | | | | | | | | | | | | | | | | | | | | | | | | | | | |
| 1270 | Demarcation of Marine Site Boundary | 21 | 01MAR11 | 21MAR11 | ■ Demarcation of Marine Site Boundary | | | | | | | | | | | | | | | | | | | | | | | | | | | | | |
| 1280 | Working Site Office establishment | 14 | 27JAN11 | 09FEB11 | ■ Working Site Office establishment | | | | | | | | | | | | | | | | | | | | | | | | | | | | | |
| Monitoring | | | | | | | | | | | | | | | | | | | | | | | | | | | | | | | | | | |
| 1160 | Takeover monitoring system from C1 | 0 | 21MAR11 * | | ◆ Takeover monitoring system from C1 | | | | | | | | | | | | | | | | | | | | | | | | | | | | | |
| 1180 | Commence Monitoring- ADMS,etc | 0 | 21MAR11 | | ◆ Commence Monitoring- ADMS,etc | | | | | | | | | | | | | | | | | | | | | | | | | | | | | |
| Dredging Works | | | | | | | | | | | | | | | | | | | | | | | | | | | | | | | | | | |
| 1070 | Submit Dredging MS | 30 | 18FEB11 | 19MAR11 | ■ Submit Dredging MS | | | | | | | | | | | | | | | | | | | | | | | | | | | | | |
| 1075 | Acceptance of Dredging MS | 0 | | 19MAR11 | ◆ Acceptance of Dredging MS | | | | | | | | | | | | | | | | | | | | | | | | | | | | | |
| 1078 | Initial Hydrographic Survey | 1 | 20MAR11 | 20MAR11 | ■ Initial Hydrographic Survey | | | | | | | | | | | | | | | | | | | | | | | | | | | | | |
| 1200 | Initial Dredging Works for Piling | 15 | 22MAR11 | 05APR11 | ■ Initial Dredging Works for Piling | | | | | | | | | | | | | | | | | | | | | | | | | | | | | |
| 1210 | Final Hydrographic survey | 3 | 07MAY12 | 09MAY12 | ■ Final Hydrographic survey | | | | | | | | | | | | | | | | | | | | | | | | | | | | | |
| 1220 | Final Dredging Works | 7 | 10MAY12 | 16MAY12 | ■ Final Dredging Works | | | | | | | | | | | | | | | | | | | | | | | | | | | | | |
| 1230 | Confirmation Hydrographic survey | 70 | 17MAY12 | 25JUL12 | ■ Confirmation Hydrographic survey | | | | | | | | | | | | | | | | | | | | | | | | | | | | | |
| Piling Works | | | | | | | | | | | | | | | | | | | | | | | | | | | | | | | | | | |
| 1240 | Submit stage platform MS | 30 | 10FEB11 | 11MAR11 | ■ Submit stage platform MS | | | | | | | | | | | | | | | | | | | | | | | | | | | | | |
| 1250 | Submit piling MS | 30 | 10FEB11 | 11MAR11 | ■ Submit piling MS | | | | | | | | | | | | | | | | | | | | | | | | | | | | | |
| P1000 | Erect temporary Piling Platform | 120 | 06APR11 | 03AUG11 | ■ Erect temporary Piling Platform | | | | | | | | | | | | | | | | | | | | | | | | | | | | | |
| P1020 | Pre-drilling | 150 | 06JUN11 | 02NOV11 | ■ Pre-drilling | | | | | | | | | | | | | | | | | | | | | | | | | | | | | |
| P1040 | Bored Piles Construction and Testing | 250 | 06JUL11 | 11MAR12 | ■ Bored Piles Construction and Testing | | | | | | | | | | | | | | | | | | | | | | | | | | | | | |
| P1060 | Drive Sheet piles along Bored piles | 140 | 03NOV11 | 21MAR12 | ■ Drive Sheet piles along Bored piles | | | | | | | | | | | | | | | | | | | | | | | | | | | | | |
| P1080 | Dismantle Temporary Piling Platform | 50 | 25FEB12 | 14APR12 | ■ Dismantle Temporary Piling Platform | | | | | | | | | | | | | | | | | | | | | | | | | | | | | |
| P1100 | Dive sheet piles beyond precast seawall | 90 | 17JAN12 | 15APR12 | ■ Dive sheet piles beyond precast seawall | | | | | | | | | | | | | | | | | | | | | | | | | | | | | |
| P1120 | Trim pilehead to cut-off level | 210 | 29SEP11 | 25APR12 | ■ Trim pilehead to cut-off level | | | | | | | | | | | | | | | | | | | | | | | | | | | | | |
| P1140 | Cut steel casing of bore piles | 210 | 06OCT11 | 02MAY12 | ■ Cut steel casing of bore piles | | | | | | | | | | | | | | | | | | | | | | | | | | | | | |
| P1160 | Cut sheet piles to design level for box units | 120 | 08JAN12 | 06MAY12 | ■ Cut sheet piles to design level for box units | | | | | | | | | | | | | | | | | | | | | | | | | | | | | |

Start date 20JAN11
 Finish date 19DEC12
 Data date 20JAN11
 Run date 05MAR11
 Page number 1A
 © Primavera Systems, Inc.

Contract no. HK/2010/06
 Wan Chai Development Phase II- Central-Wan Chai By pass over MTR Tsuen Wan Line

GAMMON-LEADER JV

Works Schedule of Marine Works for EP-356/2009

- Early bar
- Progress bar
- Critical bar
- Summary bar
- ◆ Start milestone point
- ◆ Finish milestone point

| Activity ID | Activity Name | Rem Dur | Start | Finish | 2012 | | | | | | | | | | | | | | | |
|---|--|---------|-------------|-------------|------|----|----|----|----|------|----|----|----|----|------|----|----|----|--|----|
| | | | | | May | | | | | June | | | | | July | | | | August | |
| | | | | | 23 | 30 | 07 | 14 | 21 | 28 | 04 | 11 | 18 | 25 | 02 | 09 | 16 | 23 | 30 | 06 |
| 3MRP - MAY 2012 to AUG 2012 | | | | | | | | | | | | | | | | | | | | |
| 01 - CONTRACT DATES | | | | | | | | | | | | | | | | | | | | |
| 01.2 - Possession of Site | | | | | | | | | | | | | | | | | | | | |
| 0120-2600 | Possession to Portion VIIIA | 0 | 29-Jul-12* | | | | | | | | | | | | | | | | ◆ Possession to Portion VIIIA | |
| 0120-2700 | Possession to Portion VIIIB | 0 | 29-Jul-12* | | | | | | | | | | | | | | | | ◆ Possession to Portion VIIIB | |
| 0120-2800 | Possession to Portion IXA | 0 | 29-Jul-12* | | | | | | | | | | | | | | | | ◆ Possession to Portion IXA | |
| 0120-2900 | Possession to Portion IXB | 0 | 29-Jul-12* | | | | | | | | | | | | | | | | ◆ Possession to Portion IXB | |
| 02 - PRE-CONSTRUCTION WORKS | | | | | | | | | | | | | | | | | | | | |
| 02.2 - Contractor's Submission | | | | | | | | | | | | | | | | | | | | |
| 0220-1250 | Concrete Ready Mix/Design Mix - Concrete Plant Trials & Approval | 8 | 04-Aug-11 A | 28-May-12 | | | | | | | | | | | | | | | Concrete Ready Mix/Design Mix - Concrete Plant Trials & Approval | |
| 0220-1260 | Drainage Pipes & Materials - Submission | 7 | 15-Sep-11 A | 27-May-12 | | | | | | | | | | | | | | | Drainage Pipes & Materials - Submission | |
| 0220-1270 | Drainage Pipes & Materials - ER Review/Comment | 14 | 28-May-12 | 10-Jun-12 | | | | | | | | | | | | | | | Drainage Pipes & Materials - ER Review/Comment | |
| 0220-1280 | Drainage Pipes & Materials - Resubmission | 7 | 11-Jun-12 | 17-Jun-12 | | | | | | | | | | | | | | | Drainage Pipes & Materials - Resubmission | |
| 0220-1290 | Drainage Pipes & Materials - ER Approval | 14 | 18-Jun-12 | 01-Jul-12 | | | | | | | | | | | | | | | Drainage Pipes & Materials - ER Approval | |
| 0220-1300 | Drainage Pipes & Materials - Procurement & Delivery | 14 | 25-Jun-12 | 08-Jul-12 | | | | | | | | | | | | | | | Drainage Pipes & Materials - Procurement & Delivery | |
| 0220-1360 | Tunnel Structures Materials - Submission | 28 | 02-Jul-12* | 29-Jul-12 | | | | | | | | | | | | | | | Tunnel Structures Materials - Submission | |
| 0220-1370 | Tunnel Structures Materials - ER Review/Comment | 28 | 30-Jul-12 | 26-Aug-12 | | | | | | | | | | | | | | | Tunnel Structures Materials - ER Review/Comment | |
| 0220-1460 | Bridge Bearing - Submission | 15 | 10-Oct-11 A | 16-Jul-12 | | | | | | | | | | | | | | | Bridge Bearing - Submission | |
| 0220-1470 | Bridge Bearing - ER Review/Comment | 28 | 17-Jul-12 | 13-Aug-12 | | | | | | | | | | | | | | | Bridge Bearing - ER Review/Comment | |
| 02.3 - Method Statement / Shop Drawings | | | | | | | | | | | | | | | | | | | | |
| 0230-1133 | MS Marine Piling - Resubmission (low headroom) | 0 | 19-Apr-12 A | 11-May-12 A | | | | | | | | | | | | | | | MS Marine Piling - Resubmission (low headroom) | |
| 0230-1134 | MS Marine Piling - ER Approval (low headroom) | 14 | 12-May-12 A | 03-Jun-12 | | | | | | | | | | | | | | | MS Marine Piling - ER Approval (low headroom) | |
| 0230-1260 | MS Cut & Cover Tunnel - Submission | 14 | 21-Mar-12 A | 03-Jun-12 | | | | | | | | | | | | | | | MS Cut & Cover Tunnel - Submission | |
| 0230-1270 | MS Cut & Cover Tunnel - ER Review & Comment | 28 | 04-Jun-12 | 01-Jul-12 | | | | | | | | | | | | | | | MS Cut & Cover Tunnel - ER Review & Comment | |
| 0230-1280 | MS Cut & Cover Tunnel - Resubmission | 28 | 02-Jul-12 | 29-Jul-12 | | | | | | | | | | | | | | | MS Cut & Cover Tunnel - Resubmission | |
| 0230-1290 | MS Cut & Cover Tunnel - ER Approval | 28 | 30-Jul-12 | 26-Aug-12 | | | | | | | | | | | | | | | MS Cut & Cover Tunnel - ER Approval | |
| 0230-1340 | MS Pre-cast Segment Bridge - Submission | 28 | 01-Aug-12* | 28-Aug-12 | | | | | | | | | | | | | | | MS Pre-cast Segment Bridge - Submission | |
| 0230-1460 | MS Stressing/Destressing Tendons - Submission | 28 | 01-Aug-12* | 28-Aug-12 | | | | | | | | | | | | | | | MS Stressing/Destressing Tendons - Submission | |
| 0230-1560 | MS Precasting of Bridge Segment & Beam - Resubmission | 24 | 07-May-12 A | 13-Jun-12 | | | | | | | | | | | | | | | MS Precasting of Bridge Segment & Beam - Resubmission | |
| 0230-1570 | MS Precasting of Bridge Segment & Beam - ER Approval | 28 | 14-Jun-12 | 11-Jul-12 | | | | | | | | | | | | | | | MS Precasting of Bridge Segment & Beam - ER Approval | |
| 0230-1700 | MS Temporary Bridge TA - Submission | 28 | 01-Aug-12* | 28-Aug-12 | | | | | | | | | | | | | | | MS Temporary Bridge TA - Submission | |
| 02.4 - Contractor's Design and Build Items | | | | | | | | | | | | | | | | | | | | |
| 0240-1010 | Temp Bridge "TA" Design - Prep & Submit | 48 | 16-Dec-11 A | 07-Jul-12 | | | | | | | | | | | | | | | Temp Bridge "TA" Design - Prep & Submit | |
| 0240-1020 | Temp Bridge "TA" Design - ER review and comment | 28 | 08-Jul-12 | 04-Aug-12 | | | | | | | | | | | | | | | Temp Bridge "TA" Design - ER review and comment | |
| 0240-1030 | Temp Bridge "TA" Design - Resubmission | 60 | 05-Aug-12 | 03-Oct-12 | | | | | | | | | | | | | | | Temp Bridge "TA" Design - Resubmission | |
| 0240-1041 | Temp Bridge "TD" Design - Prep & Submit | 120 | 01-Aug-12* | 28-Nov-12 | | | | | | | | | | | | | | | Temp Bridge "TD" Design - Prep & Submit | |
| 0240-1090 | Int. Noise Enclosure Design - Public Consultation | 60 | 29-Jul-11 A | 19-Jul-12 | | | | | | | | | | | | | | | Int. Noise Enclosure Design - Public Consultation | |
| 0240-1095 | Int. Noise Enclosure Design - ACABAS/ER Consultation/Submission | 72 | 16-Dec-11 A | 31-Jul-12 | | | | | | | | | | | | | | | Int. Noise Enclosure Design - ACABAS/ER Consultation/Submission | |
| 0240-1100 | Int. Noise Enclosure Design - ER review & comment | 28 | 01-Aug-12 | 28-Aug-12 | | | | | | | | | | | | | | | Int. Noise Enclosure Design - ER review & comment | |
| 0240-1120 | Noise Barrier Design - Public Consultation | 60 | 29-Jul-11 A | 19-Jul-12 | | | | | | | | | | | | | | | Noise Barrier Design - Public Consultation | |
| 0240-1122 | Noise Barrier Design - ACABAS/ER Consultation/Submission | 72 | 16-Dec-11 A | 31-Jul-12 | | | | | | | | | | | | | | | Noise Barrier Design - ACABAS/ER Consultation/Submission | |
| 0240-1124 | Noise Barrier Design - ER review & comment | 28 | 01-Aug-12 | 28-Aug-12 | | | | | | | | | | | | | | | Noise Barrier Design - ER review & comment | |
| 0240-1130 | Perm. Noise Enclosure Design - Public Consultation | 150 | 14-Feb-12 A | 17-Oct-12 | | | | | | | | | | | | | | | Perm. Noise Enclosure Design - Public Consultation | |
| 0240-1135 | Perm. Noise Enclosure Design - ACABAS/ER Consultation/Submission | 90 | 13-Jun-12 | 10-Sep-12 | | | | | | | | | | | | | | | Perm. Noise Enclosure Design - ACABAS/ER Consultation/Submission | |

- Remaining Level of Effort
- Actual Level of Effort
- Actual Work
- Remaining Work
- Critical Remaining Work
- ◆ Milestone

Contract HY/2009/19

Three Month Rolling Programme (21 MAY 2012 to 20 AUG 2012)

3MRP

3MRP - MAY 2012 to AUG 2012

Page 1 of 7

| Activity ID | Activity Name | Rem Dur | Start | Finish | 2012 | | | | | | | | | | | | | | | | | | |
|---|--|---------|-------------|-------------|------|----|----|----|----|------|----|----|----|----|------|----|----|----|--------|----|----|--|--|
| | | | | | May | | | | | June | | | | | July | | | | August | | | | |
| | | | | | 23 | 30 | 07 | 14 | 21 | 28 | 04 | 11 | 18 | 25 | 02 | 09 | 16 | 23 | 30 | 06 | 13 | | |
| 0240-1260 | Landscaping Design - Public Consultation | 180 | 12-Aug-12 | 07-Feb-13 | | | | | | | | | | | | | | | | | | | |
| 02.5 - Bridge Segment/Beam Off-site Precasting | | | | | | | | | | | | | | | | | | | | | | | |
| 0250-1010 | Segment/Beam - Procurement of Precasting Yard | 0 | 27-Feb-12 A | 30-Apr-12 A | | | | | | | | | | | | | | | | | | | |
| 0250-1020 | Segment/Beam - Precast Yard Site Clearance | 0 | 02-May-12 A | 20-May-12 A | | | | | | | | | | | | | | | | | | | |
| 0250-1030 | Segment/Beam - Precast Yard Establishment Works | 42 | 21-May-12 | 01-Jul-12 | | | | | | | | | | | | | | | | | | | |
| 0250-1100 | Segment/Beam - Geometry Control Design Approval | 48 | 14-Dec-11 A | 07-Jul-12 | | | | | | | | | | | | | | | | | | | |
| 0250-1050 | Segment/Beam - Mould Fabrication | 42 | 08-Jun-12 | 19-Jul-12 | | | | | | | | | | | | | | | | | | | |
| 0250-1040 | Segment/Beam - Precast Yard Set-up Survey Station | 18 | 14-Jun-12 | 01-Jul-12 | | | | | | | | | | | | | | | | | | | |
| 0250-1060 | Segment/Beam - Precasting of 1st Segment / Trial Segment | 12 | 20-Jul-12 | 31-Jul-12 | | | | | | | | | | | | | | | | | | | |
| 0250-1500 | Ready for Mass Production of Bridge Segment/Beam | 0 | | 31-Jul-12 | | | | | | | | | | | | | | | | | | | |
| 0250-1600 | Bridge Precast Segment Casting & Delivery for E/B Bridge | 280 | 01-Aug-12 | 07-May-13 | | | | | | | | | | | | | | | | | | | |
| 05 - SECTION 2 & 2A OF THE WORKS | | | | | | | | | | | | | | | | | | | | | | | |
| 05.1 - Cut & Cover Tunnel Ch 4855-4932 (APS Footprint) | | | | | | | | | | | | | | | | | | | | | | | |
| 05.1.1 - D-Wall Construction | | | | | | | | | | | | | | | | | | | | | | | |
| 0511-1010 | Site Survey & Setting Out (Portion VIIIA and IXA) | 3 | 30-Jul-12 | 01-Aug-12 | | | | | | | | | | | | | | | | | | | |
| 0511-1020 | Site Establishment (Portion VIIIA and IXA) | 28 | 30-Jul-12 | 30-Aug-12 | | | | | | | | | | | | | | | | | | | |
| 0511-1030 | D-wall N46-N51 Pre-drilling (6 nos@6d - 3 rigs) | 12 | 31-Jul-12 | 13-Aug-12 | | | | | | | | | | | | | | | | | | | |
| 0511-1060 | D-wall S48-S55 + BC39 Pre-drilling (9 nos@3d - 3 rigs) | 15 | 31-Jul-12 | 16-Aug-12 | | | | | | | | | | | | | | | | | | | |
| 05.2 - Cut & Cover Tunnel Ch 4932-5149 | | | | | | | | | | | | | | | | | | | | | | | |
| 05.2.1 - D-Wall Construction | | | | | | | | | | | | | | | | | | | | | | | |
| 0521-1790.10 | D-wall Panel N74A (6m - 590cu.m) | 10 | 01-Jun-12* | 12-Jun-12 | | | | | | | | | | | | | | | | | | | |
| 0521-1990.53 | Existing Utilities Diversion for S81 to S84 | 15 | 21-May-12 | 06-Jun-12 | | | | | | | | | | | | | | | | | | | |
| 0521-1990.63 | Guide Wall Construction for S81 to S84 | 9 | 07-Jun-12 | 16-Jun-12 | | | | | | | | | | | | | | | | | | | |
| 0521-1990.12 | D-wall South Panel S100 | 0 | 21-Apr-12 A | 08-May-12 A | | | | | | | | | | | | | | | | | | | |
| 0521-1990.13 | D-wall South Panel S95 | 0 | 11-Apr-12 A | 03-May-12 A | | | | | | | | | | | | | | | | | | | |
| 0521-1990.14 | D-wall South Panel S112 | 0 | 05-Apr-12 A | 24-Apr-12 A | | | | | | | | | | | | | | | | | | | |
| 0521-1990.15 | D-wall South Panel S106 | 0 | 23-Mar-12 A | 27-Apr-12 A | | | | | | | | | | | | | | | | | | | |
| 0521-1990.16 | D-wall South Panel S113 | 0 | 26-Apr-12 A | 11-May-12 A | | | | | | | | | | | | | | | | | | | |
| 0521-1990.21 | D-wall South Panel S92 | 0 | 24-Apr-12 A | 19-May-12 A | | | | | | | | | | | | | | | | | | | |
| 0521-1990.22 | D-wall South Panel S86 | 0 | 17-Apr-12 A | 04-May-12 A | | | | | | | | | | | | | | | | | | | |
| 0521-1990.23 | D-wall South Panel S90 | 0 | 20-Apr-12 A | 15-May-12 A | | | | | | | | | | | | | | | | | | | |
| 0521-1990.29 | D-wall South Panel S85 | 7 | 14-May-12 A | 28-May-12 | | | | | | | | | | | | | | | | | | | |
| 0521-1990.25 | D-wall South Panel S93 | 9 | 26-May-12 | 05-Jun-12 | | | | | | | | | | | | | | | | | | | |
| 0521-1990.28 | D-wall South Panel S88 | 9 | 02-Jun-12 | 12-Jun-12 | | | | | | | | | | | | | | | | | | | |
| 0521-1990.26 | D-wall South Panel S89 | 9 | 13-Jun-12 | 22-Jun-12 | | | | | | | | | | | | | | | | | | | |
| 0521-1990.33 | D-wall South Panel S81 | 9 | 20-Jun-12 | 30-Jun-12 | | | | | | | | | | | | | | | | | | | |
| 0521-1990.20 | D-wall South Panel S83 | 9 | 03-Jul-12 | 12-Jul-12 | | | | | | | | | | | | | | | | | | | |
| 0521-1990.27 | D-wall South Panel S84 | 9 | 11-Jul-12 | 20-Jul-12 | | | | | | | | | | | | | | | | | | | |
| 0521-1990.24 | D-wall South Panel S82 | 9 | 19-Jul-12 | 28-Jul-12 | | | | | | | | | | | | | | | | | | | |
| 0521-1945.10 | Temp Bulk Headhead TBW1 | 6 | 03-Jul-12 | 09-Jul-12 | | | | | | | | | | | | | | | | | | | |
| 0521-1945.15 | Temp Bulk Headhead TBW3 | 6 | 10-Jul-12 | 16-Jul-12 | | | | | | | | | | | | | | | | | | | |
| 0521-1945.20 | Temp Bulk Headhead TBW5 | 6 | 17-Jul-12 | 23-Jul-12 | | | | | | | | | | | | | | | | | | | |
| 0521-1945.25 | Temp Bulk Headhead TBW2 | 6 | 24-Jul-12 | 30-Jul-12 | | | | | | | | | | | | | | | | | | | |
| 0521-1945.30 | Temp Bulk Headhead TBW4 | 6 | 31-Jul-12 | 06-Aug-12 | | | | | | | | | | | | | | | | | | | |

- █ Remaining Level of Effort
- █ Actual Level of Effort
- █ Actual Work
- █ Remaining Work
- █ Critical Remaining Work
- ◆ Milestone

Contract HY/2009/19

Three Month Rolling Programme (21 MAY 2012 to 20 AUG 2012)

3MRP

3MRP - MAY 2012 to AUG 2012

| Activity ID | Activity Name | Rem Dur | Start | Finish | 2012 | | | | | | | | | | | | | | | |
|---------------------------------------|---|---------|-------------|-------------|---|----|----|----|----|------|----|----|----|----|------|----|----|----|--------|----|
| | | | | | May | | | | | June | | | | | July | | | | August | |
| | | | | | 23 | 30 | 07 | 14 | 21 | 28 | 04 | 11 | 18 | 25 | 02 | 09 | 16 | 23 | 30 | 06 |
| 0521-1800.20 | D-wall N65-N70 Pre-drilling (6 nos. - 1 rig@6d/hole) | 0 | 02-Apr-12 A | 19-May-12 A | D-wall N65-N70 Pre-drilling (6 nos. - 1 rig@6d/hole) | | | | | | | | | | | | | | | |
| 0521-1810 | D-wall N59-N70 Grouting for Existing Seawall Rubble Mound | 14 | 27-Apr-12 A | 05-Jun-12 | D-wall N59-N70 Grouting for Existing Seawall Rubble Mound | | | | | | | | | | | | | | | |
| 0521-1820 | D-wall N59-N70 Guide Wall | 14 | 09-Apr-12 A | 05-Jun-12 | D-wall N59-N70 Guide Wall | | | | | | | | | | | | | | | |
| 0521-1840 | D-wall N52-N58 Pre-drilling (7 nos@6d - 2 rig) | 9 | 09-Apr-12 A | 30-May-12 | D-wall N52-N58 Pre-drilling (7 nos@6d - 2 rig) | | | | | | | | | | | | | | | |
| 0521-1850 | D-wall N52-N58 Grouting for Existing Seawall Rubble Mound | 14 | 03-May-12 A | 05-Jun-12 | D-wall N52-N58 Grouting for Existing Seawall Rubble Mound | | | | | | | | | | | | | | | |
| 0521-1860 | D-wall N52-N58 Guide Wall | 12 | 31-May-12 | 13-Jun-12 | D-wall N52-N58 Guide Wall | | | | | | | | | | | | | | | |
| 0521-1830.15 | D-wall Panel N69 (6m - 621cu.m) | 10 | 09-May-12 A | 31-May-12 | D-wall Panel N69 (6m - 621cu.m) | | | | | | | | | | | | | | | |
| 0521-1830.10 | D-wall Panel N70 (6m - 630cu.m) | 10 | 01-Jun-12 | 12-Jun-12 | D-wall Panel N70 (6m - 630cu.m) | | | | | | | | | | | | | | | |
| 0521-1830.25 | D-wall Panel N67 (3.95m - 409cu.m) | 10 | 13-Jun-12 | 25-Jun-12 | D-wall Panel N67 (3.95m - 409cu.m) | | | | | | | | | | | | | | | |
| 0521-1835.10 | D-wall Panel N54 (3.77m - 355cu.m) | 10 | 14-Jun-12 | 26-Jun-12 | D-wall Panel N54 (3.77m - 355cu.m) | | | | | | | | | | | | | | | |
| 0521-1830.35 | D-wall Panel N65 (5.7m - 590cu.m) | 10 | 22-Jun-12 | 05-Jul-12 | D-wall Panel N65 (5.7m - 590cu.m) | | | | | | | | | | | | | | | |
| 0521-1835.15 | D-wall Panel N59 (5.6m - 529cu.m) | 10 | 25-Jun-12 | 06-Jul-12 | D-wall Panel N59 (5.6m - 529cu.m) | | | | | | | | | | | | | | | |
| 0521-1830.20 | D-wall Panel N68 (3.95m - 409cu.m) | 10 | 04-Jul-12 | 14-Jul-12 | D-wall Panel N68 (3.95m - 409cu.m) | | | | | | | | | | | | | | | |
| 0521-1835.20 | D-wall Panel N52 (5.6m - 529cu.m) | 10 | 05-Jul-12 | 16-Jul-12 | D-wall Panel N52 (5.6m - 529cu.m) | | | | | | | | | | | | | | | |
| 0521-1830.30 | D-wall Panel N66 (4.75m - 492cu.m) | 10 | 13-Jul-12 | 24-Jul-12 | D-wall Panel N66 (4.75m - 492cu.m) | | | | | | | | | | | | | | | |
| 0521-1835.25 | D-wall Panel N63 (5.6m - 529cu.m) | 10 | 14-Jul-12 | 25-Jul-12 | D-wall Panel N63 (5.6m - 529cu.m) | | | | | | | | | | | | | | | |
| 0521-1835.30 | D-wall Panel N58 (5.6m - 529cu.m) | 10 | 24-Jul-12 | 03-Aug-12 | D-wall Panel N58 (5.6m - 529cu.m) | | | | | | | | | | | | | | | |
| 0521-1835.35 | D-wall Panel N62 (5.6m - 529cu.m) | 10 | 02-Aug-12 | 13-Aug-12 | D-wall Panel N62 (5.6m - 529cu.m) | | | | | | | | | | | | | | | |
| 0521-1835.40 | D-wall Panel N55 (5.6m - 529cu.m) | 10 | 11-Aug-12 | 22-Aug-12 | D-wall Panel N55 (5.6m - 529cu.m) | | | | | | | | | | | | | | | |
| 0521-2070 | D-wall S66-S77 Guide Wall | 11 | 16-May-12 A | 02-Jun-12 | D-wall S66-S77 Guide Wall | | | | | | | | | | | | | | | |
| 0521-1990.42 | D-wall South Panel S75 | 10 | 26-May-12 | 07-Jun-12 | D-wall South Panel S75 | | | | | | | | | | | | | | | |
| 0521-1990.36 | D-wall South Panel S70 | 10 | 07-Jun-12 | 19-Jun-12 | D-wall South Panel S70 | | | | | | | | | | | | | | | |
| 0521-1990.39 | D-wall South Panel S73 | 10 | 19-Jun-12 | 03-Jul-12 | D-wall South Panel S73 | | | | | | | | | | | | | | | |
| 0521-1990.43 | D-wall South Panel S77 | 10 | 03-Jul-12 | 14-Jul-12 | D-wall South Panel S77 | | | | | | | | | | | | | | | |
| 0521-1990.34 | D-wall South Panel S68 | 10 | 11-Jul-12 | 23-Jul-12 | D-wall South Panel S68 | | | | | | | | | | | | | | | |
| 0521-1990.40 | D-wall South Panel S74 | 10 | 19-Jul-12 | 31-Jul-12 | D-wall South Panel S74 | | | | | | | | | | | | | | | |
| 0521-1990.35 | D-wall South Panel S69 | 10 | 27-Jul-12 | 08-Aug-12 | D-wall South Panel S69 | | | | | | | | | | | | | | | |
| 0521-1990.38 | D-wall South Panel S72 | 10 | 04-Aug-12 | 16-Aug-12 | D-wall South Panel S72 | | | | | | | | | | | | | | | |
| 0521-2090 | D-wall S60-S65 Pre-drilling | 18 | 27-Feb-12 A | 03-Jul-12 | D-wall S60-S65 Pre-drilling | | | | | | | | | | | | | | | |
| 0521-2100 | D-wall S60-S65 Guide Wall | 15 | 04-Jul-12 | 20-Jul-12 | D-wall S60-S65 Guide Wall | | | | | | | | | | | | | | | |
| 0521-2130 | D-wall S56-S59 Guide Wall | 15 | 12-Jul-12 | 28-Jul-12 | D-wall S56-S59 Guide Wall | | | | | | | | | | | | | | | |
| 05.2.2 - Barrette Construction | | | | | | | | | | | | | | | | | | | | |
| 0522-2210.64 | Barrette Pile BC64 | 0 | 12-Apr-12 A | 09-May-12 A | Barrette Pile BC64 | | | | | | | | | | | | | | | |
| 0522-2210.68 | Barrette Pile BC68 | 0 | 29-Mar-12 A | 30-Apr-12 A | Barrette Pile BC68 | | | | | | | | | | | | | | | |
| 0522-2210.57 | Barrette Pile BC57 | 5 | 07-May-12 A | 25-May-12 | Barrette Pile BC57 | | | | | | | | | | | | | | | |
| 0522-2210.61 | Barrette Pile BC61 | 9 | 21-May-12 | 30-May-12 | Barrette Pile BC61 | | | | | | | | | | | | | | | |
| 0522-2210.63 | Barrette Pile BC63 | 1 | 19-Mar-12 A | 21-May-12 | Barrette Pile BC63 | | | | | | | | | | | | | | | |
| 0522-2210.65 | Barrette Pile BC65 | 9 | 24-May-12 | 02-Jun-12 | Barrette Pile BC65 | | | | | | | | | | | | | | | |
| 0522-2210.66 | Barrette Pile BC66 | 9 | 01-Jun-12 | 11-Jun-12 | Barrette Pile BC66 | | | | | | | | | | | | | | | |
| 0522-2210.70 | Barrette Pile BC62 | 10 | 09-Jun-12 | 20-Jun-12 | Barrette Pile BC62 | | | | | | | | | | | | | | | |
| 0522-2210.55 | Barrette Pile BC55 | 9 | 18-Jun-12 | 28-Jun-12 | Barrette Pile BC55 | | | | | | | | | | | | | | | |
| 0522-2210.58 | Barrette Pile BC58 | 9 | 27-Jun-12 | 07-Jul-12 | Barrette Pile BC58 | | | | | | | | | | | | | | | |
| 0522-2210.59 | Barrette Pile BC59 | 9 | 06-Jul-12 | 16-Jul-12 | Barrette Pile BC59 | | | | | | | | | | | | | | | |
| 0522-2210.56 | Barrette Pile BC56 | 9 | 14-Jul-12 | 24-Jul-12 | Barrette Pile BC56 | | | | | | | | | | | | | | | |

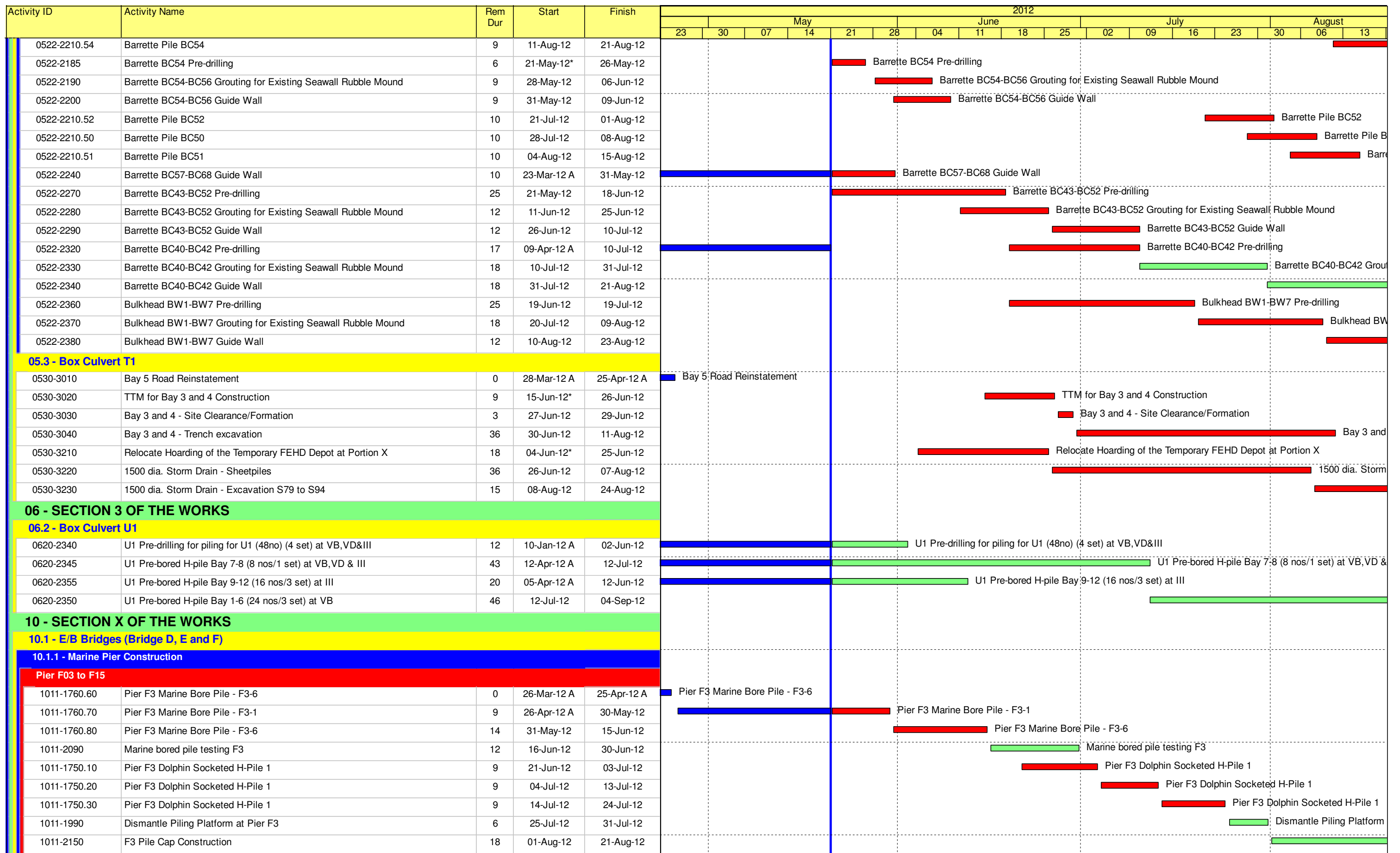
- Remaining Level of Effort
- Actual Level of Effort
- Actual Work
- Remaining Work
- Critical Remaining Work
- ◆ Milestone

Contract HY/2009/19

Three Month Rolling Programme (21 MAY 2012 to 20 AUG 2012)

3MRP

3MRP - MAY 2012 to AUG 2012



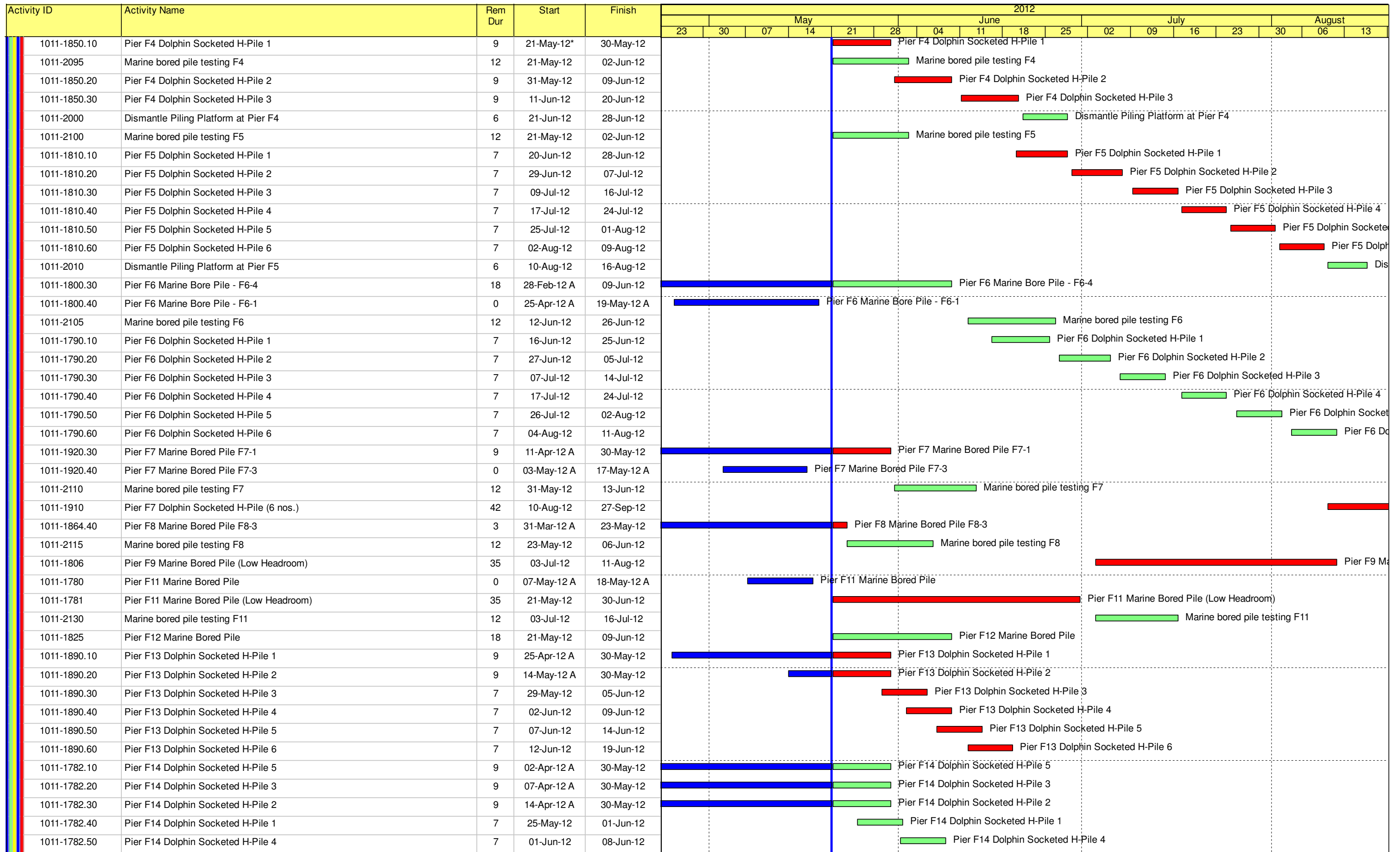
- █ Remaining Level of Effort
- █ Actual Level of Effort
- █ Actual Work
- █ Remaining Work
- █ Critical Remaining Work
- ◆ Milestone

Contract HY/2009/19

Three Month Rolling Programme (21 MAY 2012 to 20 AUG 2012)

3MRP

3MRP - MAY 2012 to AUG 2012



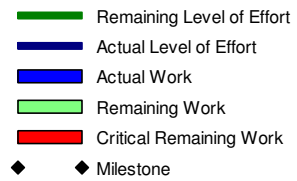
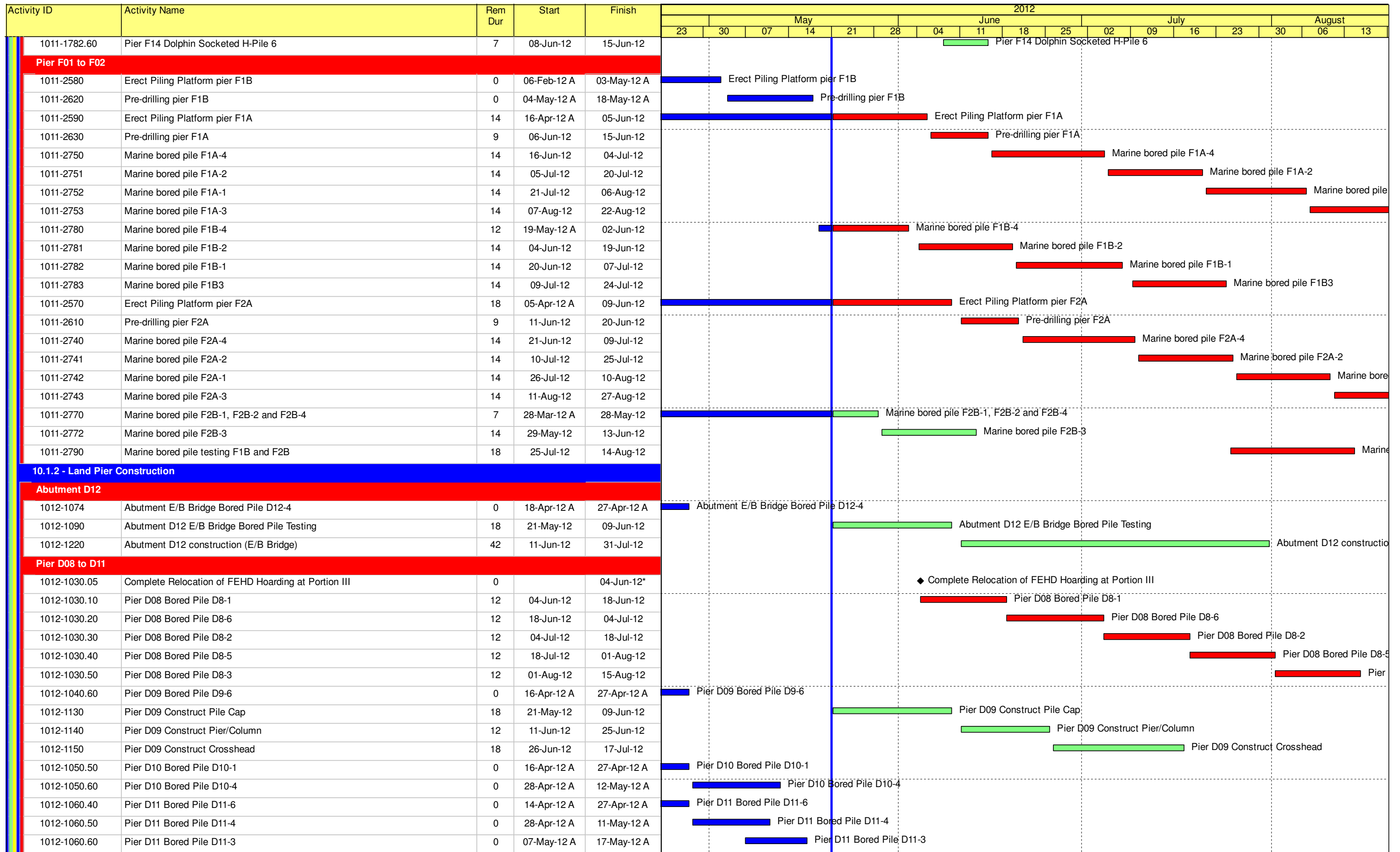
- Remaining Level of Effort
- Actual Level of Effort
- Actual Work
- Remaining Work
- Critical Remaining Work
- ◆ Milestone

Contract HY/2009/19

Three Month Rolling Programme (21 MAY 2012 to 20 AUG 2012)

3MRP

3MRP - MAY 2012 to AUG 2012



Contract HY/2009/19

Three Month Rolling Programme (21 MAY 2012 to 20 AUG 2012)

3MRP
3MRP - MAY 2012 to AUG 2012
Page 6 of 7

| Activity ID | Activity Name | Rem Dur | Start | Finish | 2012 | | | | | | | | | | | | | | | | | | | | | | |
|---|---|---------|-------------|-----------|------|----|----|----|----|------|----|----|----|------|----|----|----|--------|----|----|----|--|--|--|--|--|--|
| | | | | | May | | | | | June | | | | July | | | | August | | | | | | | | | |
| | | | | | 23 | 30 | 07 | 14 | 21 | 28 | 04 | 11 | 18 | 25 | 02 | 09 | 16 | 23 | 30 | 06 | 13 | | | | | | |
| 1012-1190 | Pier D11 Construct Pile Cap | 18 | 11-Jun-12 | 03-Jul-12 | | | | | | | | | | | | | | | | | | | | | | | |
| 1012-1200 | Pier D11 Construct Pier/Column | 12 | 04-Jul-12 | 17-Jul-12 | | | | | | | | | | | | | | | | | | | | | | | |
| 1012-1210 | Pier D11 Construct Crosshead | 18 | 18-Jul-12 | 07-Aug-12 | | | | | | | | | | | | | | | | | | | | | | | |
| Pier D05 to D07 | | | | | | | | | | | | | | | | | | | | | | | | | | | |
| 1012-1290.20 | Pier D05 Bored Pile D05-1 | 13 | 02-Dec-11 A | 30-Jul-12 | | | | | | | | | | | | | | | | | | | | | | | |
| 1012-1300 | Pier D05/D06/D07 Bored Piles Testing | 18 | 30-Jul-12 | 20-Aug-12 | | | | | | | | | | | | | | | | | | | | | | | |
| 1012-1270 | Pier D07 Bored Piles (6 piles) | 108 | 03-Jul-12* | 07-Nov-12 | | | | | | | | | | | | | | | | | | | | | | | |
| 10.1.3 - E/B Bridge Construction | | | | | | | | | | | | | | | | | | | | | | | | | | | |
| Bridge D3 | | | | | | | | | | | | | | | | | | | | | | | | | | | |
| 1013-1000.10 | Segment and Beam Launching - Procurement of Sub-contractor | 14 | 21-Jan-12 A | 05-Jun-12 | | | | | | | | | | | | | | | | | | | | | | | |
| 1013-1000.20 | Segment and Beam Launching - Submit Design Launching Girder | 26 | 14-May-12 A | 19-Jun-12 | | | | | | | | | | | | | | | | | | | | | | | |
| 1013-1000.30 | Segment and Beam Launching - Approve Design Launching Girder | 28 | 20-Jun-12 | 24-Jul-12 | | | | | | | | | | | | | | | | | | | | | | | |
| 1013-1010 | Segment and Beam Launching - Fabricate & Deliver Launching Girder | 98 | 25-Jul-12 | 17-Nov-12 | | | | | | | | | | | | | | | | | | | | | | | |
| 10.3 - Middle Bridge (Bridge F) | | | | | | | | | | | | | | | | | | | | | | | | | | | |
| 10.3.1 - Pier Construction | | | | | | | | | | | | | | | | | | | | | | | | | | | |
| Abutment D12 | | | | | | | | | | | | | | | | | | | | | | | | | | | |
| 1031-1040 | Bored Piles (4 nos) at D12 at III (for F1B1) | 47 | 07-May-12 A | 16-Jul-12 | | | | | | | | | | | | | | | | | | | | | | | |

- Remaining Level of Effort
- Actual Level of Effort
- Actual Work
- Remaining Work
- Critical Remaining Work
- Milestone

Contract HY/2009/19

Three Month Rolling Programme (21 MAY 2012 to 20 AUG 2012)

3MRP

3MRP - MAY 2012 to AUG 2012

Page 7 of 7